



# ACT matching events

## **ERA Career priority group**

27th & 29th October 2020

Dr Claartje Vinkenburg, Portia LTD

Dr Meytal Eran-Jona Dr Rochelle Fritch Dr Carolin Ossenkop

1

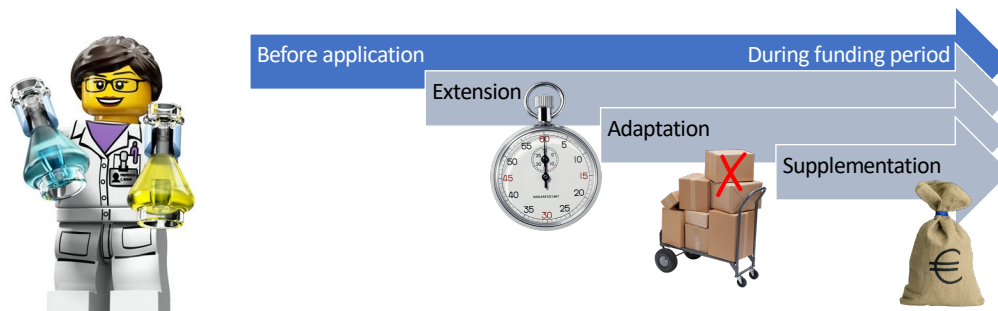


## Today's program

- Presentations and Q&A
  - on possible career consequences of Covid-19 (by Meytal Eran-Jona)
  - on measuring Covid-19 consequences (by Marta Warat)
  - on compensation measures (by Claartje Vinkenburg)
  - on state of the art work-family measures (by Adrienne Hopkins)
- BREAK
- Breakouts to brainstorm on solutions and ideas
  - compensating for covid-19 in contract, tenure and promotion decisions - Meytal & Rochelle
  - supporting academics with care responsibilities in working from home - Claartje & Adrienne
  - surveying researchers on covid-19's career and work/family consequences - Ewa & Marta

2

## Claartje Vinkenburg: Compensating researchers (for time to care in research funding)



3

## Controversial compensation?

- *Extension* is fairly common (but time is always short!):
  - ERC eligibility window (unintended consequences for fathers?)
- *Supplementation* is less common:
  - SNSF 120% support / flexibility grant \* (“getting help” or “getting even”?)
- *Adaptation* of criteria is rare and controversial:
  - Australian universities: Achievement Relative to Opportunity (AR2O)\*\*

 **Kate Crawford**  
@katecrawford

 Follow

\* <http://www.snf.ch/en/funding/supplementary-measures/flexibility-grant/Pages/default.aspx#>

\*\* [https://www.web.uwa.edu.au/inclusion-diversity/gender#new\\_div\\_2349358](https://www.web.uwa.edu.au/inclusion-diversity/gender#new_div_2349358)

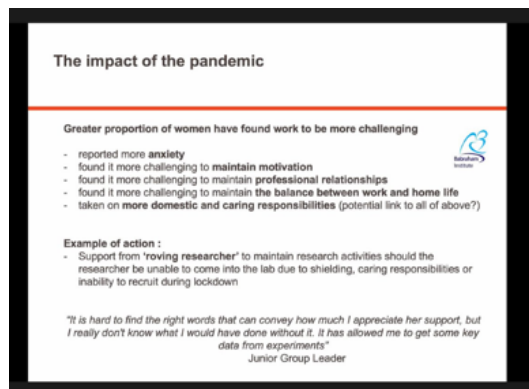
‘How many papers is a baby worth?’ A controversial effort to account for parenting in academic productivity metrics. [bit.ly/NuxT8p](https://bit.ly/NuxT8p)

4

## Compensation during Covid-19:



@CurtRice OsloMet Norwegian News



@GAlmouzni Institut Curie (EMBL session Covid-19 impact)

5



Thank you very much

Web: [act-on-gender.eu](http://act-on-gender.eu)

Twitter: @ACTonGender

6